



Sax Elettrico, înălțimea 1800 mm, lățime 395 mm, electric cu controlul electronic wireless, Alb Standard

Caracteristici Tehnice

colectoare cu secțiunea circulară cu diametrul de 30mm
elemente din oțel cu secțiunea dreptunghiulară 20x25 mm
cu lichid termovector inclus
rezistență electrică de clasa 2 (izolație dublă), cu control electronic wireless
dispozitivul de comandă Wireless, pe lângă faptul că monitorizează și setează temperatura dorită, are următoarele funcții: regim Confort, redus noapte, antiîngheț și oprire programată
cablu de alimentare cu lățime de 1200 mm (ieșire cablu în partea dreaptă jos)
alimentare în monofază 220-230V, 50 Hz, Clasa II, IP 44.

Standard equipment

console pentru fixarea pe perete cu șuruburi și dibluri
telecomandă Wireless
instalare orizontală și verticală; la instalarea orizontală ledurile trebuie să fie în jos

Certifications



Plus



Date tehnice

Model	Depth (mm)	Height (mm)	Width (mm)	Weight (kg)	Electric Power (Watt)
Sax electric 500 Watt	80,0	900	315	17,60	500
Sax electric 750 Watt	80,0	900	395	21,80	750
Sax electric cu lumina 500 Watt	80,0	900	315	17,60	500
Sax electric cu lumina 750 Watt	80,0	900	395	21,80	750
Sax electric 1000 Watt	80,0	1800	395	38,50	1000
Sax electric 1500 Watt	80,0	1800	435	42,70	1500
Sax electric 1800 Watt	80,0	1800	475	46,80	1800
Sax electric cu lumina 1000 Watt	80,0	1800	395	38,50	1000
Sax electric cu lumina 1500 Watt	80,0	1800	435	42,70	1500
Sax electric cu lumina 1800 Watt	80,0	1800	475	46,80	1800

Sax electric este prevăzut cu o carcasă de metal de aceeași culoare cu caloriferul, care conține în interior rezistența electrică și în exterior o placă de metacrilat transparentă. Posibilitate de preinstalare a ledurilor, indicând în comandă codul KITLED.

Standard equipment

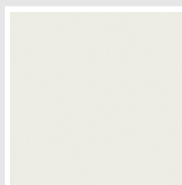
- console pentru fixarea pe perete cu șuruburi și dibluri
- telecomandă Wireless
- instalare orizontală și verticală; la instalarea orizontală ledurile trebuie să fie în jos

Packing

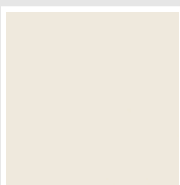
Atenția pe care Irsap o rezervă fiecărui calorifer se manifestă și în grija pentru ambalaj. Fiecare produs este protejat de un material antișoc care previne zgârieturile și deteriorările accidentale pe parcursul transportului sau a manipulării pe șantier. Toate ambalajele trebuie colectate și reciclate conform legislației în vigoare.

Colori e finisaje

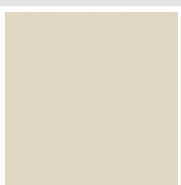
CLASSIC



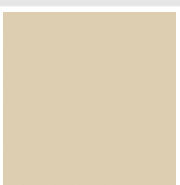
Bianco Edelweiss
Opaco
Cod. 34



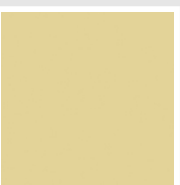
Bianco Whisper
Peach
Cod. 36



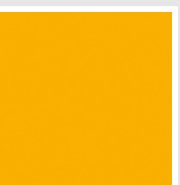
Jasmin Opaco
Cod. 35



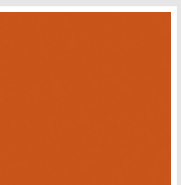
Beige Naturale
Cod. 38



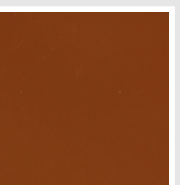
Beige Cream
Cod. 26



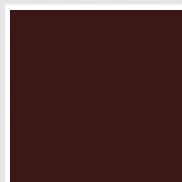
Giallo Melone - RAL
1028
Cod. E7



Arancio - RAL 2004
Cod. 17



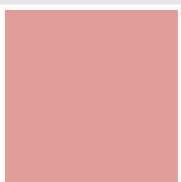
Marrone Ruggine -
RAL 8004
Cod. E1



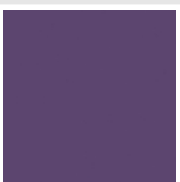
Vinaccia - RAL 3005
Cod. H9



Rosso Fragola - RAL
3018
Cod. Y3



Rosa - RAL 3015
Cod. R2



Lilla Bluastro - RAL
4005
Cod. R3



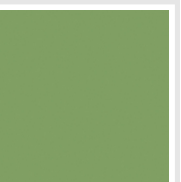
Porpora Traffico -
RAL 4006
Cod. R6



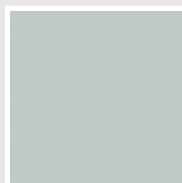
Verde Bosco - RAL
6005
Cod. 19



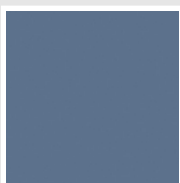
Verde Erba - RAL
6018
Cod. N3



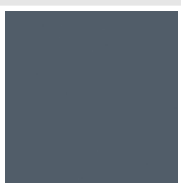
Verde Salvia - RAL
6021
Cod. E6



Verde Greenwich
Cod. 28



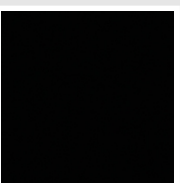
Blu Pastello - RAL
5024
Cod. G7



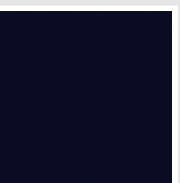
Blu Colomba - RAL
5014
Cod. G9



Blu Hewi
Cod. 11

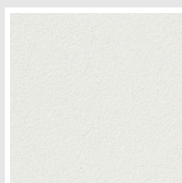


Nero - RAL 9005
Cod. 10

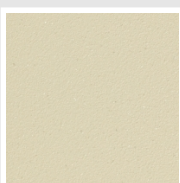


Deep Blue
Cod. 2F

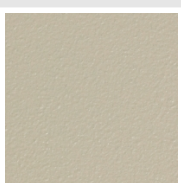
SPECIAL



Bianco Perla
Cod. 16



Quartz 1
Cod. 1C



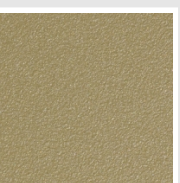
Sablé
Cod. Y4



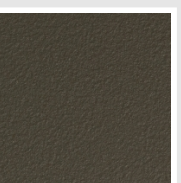
Quartz 2
Cod. 2C



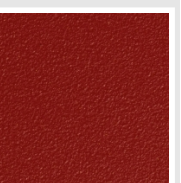
Sunstone
Cod. 2D



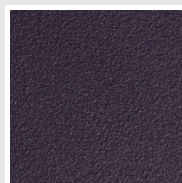
Petra
Cod. 3D



Bruno Tabacco
Cod. 1B



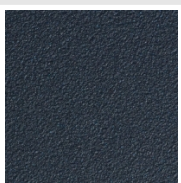
Flame Red
Cod. 7D



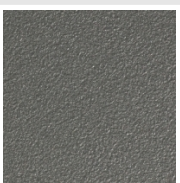
Purple Blue
Cod. 1D



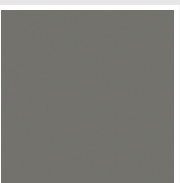
Azurite
Cod. 6D



Azurite 3
Cod. 6C



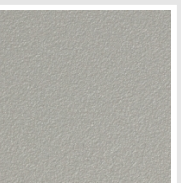
Grigio Medio
Cod. 4D



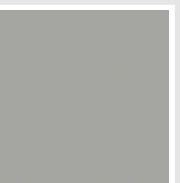
Grigio Titanio
Metallizzato - RAL
9023
Cod. L3



Grigio Silver
Cod. 5D



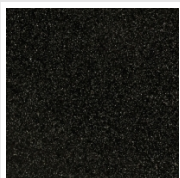
Grigio Perla
Cod. L6



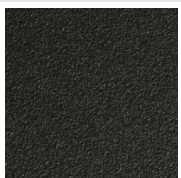
Grigio Alluminio -
RAL 9006
Cod. B4



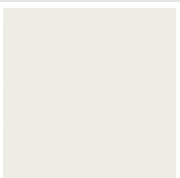
Nero Grafite
Cod. 18



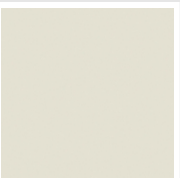
Grigio Quarzo
Cod. 31



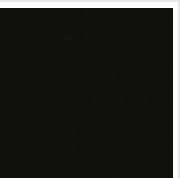
Nero Satinato
Cod. 30



Luxury White
Cod. J7



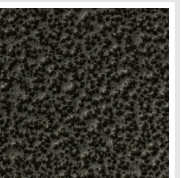
Bianco Opaco
Cod. J8



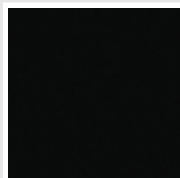
Nero Opaco
Cod. K1



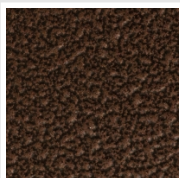
Bronzo
Cod. J9



Grigio Martellato
Cod. 32

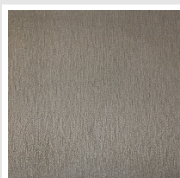


Luxury Black
Cod. J3



Rame Martellato
Cod. J4

SURFACES



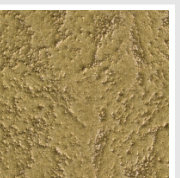
Trattamento Loft
Cod. TR



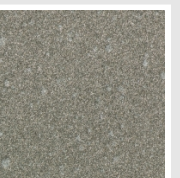
Taftah Argento
Cod. K4



Taftah Platino
Cod. K3



Taftah Oro
Cod. K2



Grey Shadow
Cod. X6

The Colors used in this folder are not considered binding. The different technological painting processes and the materials used for the realization can not have a perfect color match with the delivered product. Irsap company reserves the right to introduce at any time whatever modifications necessary to the improvement of the product.